



# DENO - Inspired by Precision

Inspired by Precision



WE ARE YOUR PARTNER FOR THE FOLLOWING SECTORS OF INDUSTRY:

- Drive technology
- Electric motors
- Power engineering
- Automotive
- Aviation
- Mechanical engineering
- Medical technology
- Assembly technology
- Rail-based vehicles
- Solar technology
- Wind power

---

Canara Standard Keys Pvt. Ltd.  
21, M M Industrial Estate, P B 8206  
K R Road, Yediyur, Bengaluru,  
Karnataka 560082

[www.deno-india.com](http://www.deno-india.com)

---

# A strong workforce. Outstanding technology.

DENO India a brand of Canara Standard Keys Pvt. Ltd., is a unique business that has been delivering the highest standards of quality and customer satisfaction for over 50 years. The long-term success of the company is an outcome of best practises followed in-house & value addition for customers.

After merger and acquisition by Nosta GmbH and DEMA Präzisionsteile GmbH, we are now aiming to reach the next level to serve you better and at a broader spectrum as demanded by customers today.

Our corporate culture combines Domestic and International Technical and Marketing know-how to serve Customers relentlessly. DENO India strives for long-term, trusting and successful business relationships.

We are marching towards the next level with great customers like you.



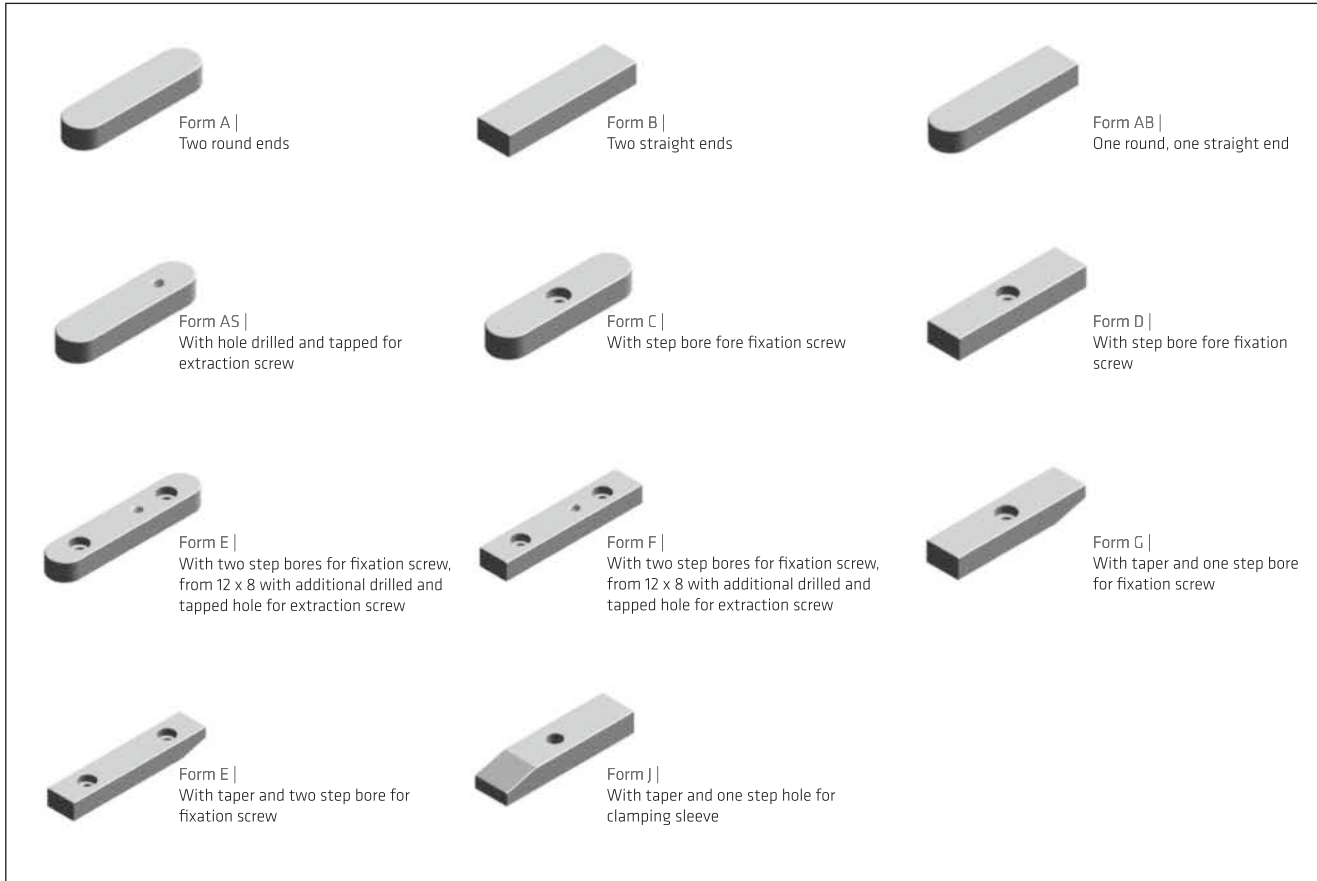
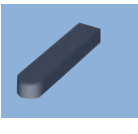
# The key to the right Parallel key.



## Explanation of part numbers

8500	85X0	85R0	A	B	Z	02	02	010
8500	85X0	85R0	A	B	Z	02	02	008
8500	85X0	85R0	A	B	Z	02	02	010

<b>85</b>	<b>X</b>	<b>0</b>	<b>A</b>	<b>02</b>	<b>02</b>	<b>010</b>	= part number
product group DIN 6885	material e.g. 1.4571	tolerance	form	width	height	length	
85 = DIN 6885	0 = C45+C X = 1.4571 R = 1.4057		A = A B = B Z = AB				



## More than standards

### PARALLEL KEYS FROM DENO - MORE THAN JUST A STANDARD ARTICLE

DENO has been producing Parallel keys since 1976. Parallel keys are available ex stock in all DIN 6885 dimensions. We produce the keys in Material C45+C and in stainless steel 1.4571 and 1.4057.

Other materials in stainless steel, as well as special materials or dimensions can be produced on request.

#### FURTHERMORE WE CAN DO:

- Hardened Parallel keys
- Parallel keys with galvanic treatment
- Individually drilled and tapped keys
- Differently formed keys

#### TECHNICAL ADVICE:

All edges on Parallel keys are rounded !

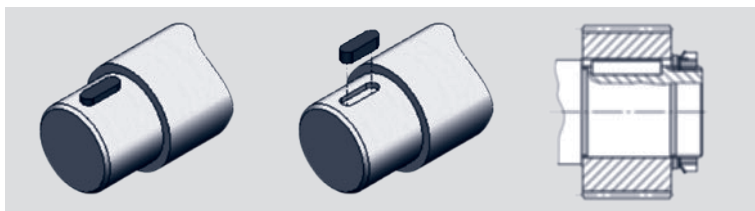
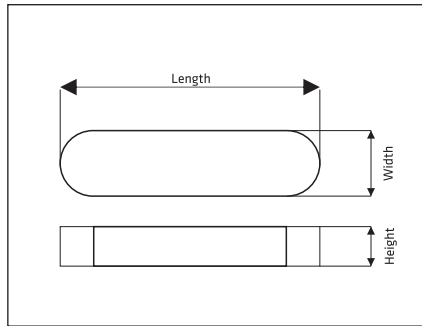


# Parallel keys DIN 6885



standard

DIN 6885



## Weight of parallel keys

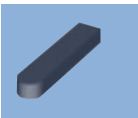
Parallel key	Width b	2	3	4	5	6	8	10	12	14	16	18	20	22	25	28	32	36	40	45	50	56	63	70	80	90	100			
DIN 6880	Height h	2	3	4	5	6	7	8	8	9	10	11	12	14	14	16	18	20	22	25	28	32	32	36	40	45	50			
Fitting shaft diameter	From	6	8	10	12	17	22	30	38	44	50	58	65	75	85	95	110	130	150	170	200	230	260	290	330	380	440			
	To	8	10	12	17	22	30	38	44	50	58	65	75	85	95	110	130	150	170	200	230	260	290	330	380	440	500			
Length	Tolerance h9	0,025	0,025	0,030	0,030	0,030	0,036	0,036	0,043	0,043	0,043	0,043	0,052	0,052	0,052	0,052	0,062	0,062	0,062	0,062	0,062	0,074	0,074	0,074	0,087	0,087	0,089			
Length	Tolerance	Tolerance h11	0,060	0,060	0,075	0,075	0,090	0,090	0,110	0,110	0,110	0,110	0,130	0,130	0,130	0,130	0,160	0,160	0,160	0,160	0,160	0,160	0,160	0,160	0,220	0,220	0,220			
6			0,188	0,423																										
8			0,251	0,565	1,010																									
10	-0,2		0,314	0,707	1,260	1,950																								
12			0,377	0,849	1,510	2,350																								
14			0,440	0,989	1,760	2,750	3,940																							
16	-0,2		0,502	1,130	2,010	3,140	4,520																							
18			0,565	1,270	2,260	3,530	5,090	7,990																						
20			0,628	1,410	2,510	3,920	5,560	8,800																						
22	-0,3			1,550	2,760	4,320	6,220	9,670	13,8																					
25				1,770	3,140	4,910	7,070	11,0	15,7																					
28				1,980	3,520	5,500	7,910	12,3	17,6	21,1																				
32	-0,3			2,260	4,020	6,280	9,040	14,1	20,1	24,1																				
36				2,54	4,52	7,06	10,20	15,80	22,60	27,10	35,60																			
40				5,02	7,85	11,30	17,60	25,10	30,10	39,60																				
45	-0,3			5,65	8,83	12,70	19,80	28,30	33,90	44,50	56,50																			
50					9,81	14,10	22,00	31,40	37,70	49,50	62,80	77,70																		
56					11,00	15,80	24,60	35,20	42,20	55,40	70,30	87,00	106,0																	
63	-0,3					17,80	27,70	39,60	47,50	62,30	79,10	97,00	119,0	152,0																
70						19,8	30,8	44,0	52,8	69,2	88	109	132	169	192															
80	-0,3					35,2	50,2	60,3	79,1	100	124	150	193	220	281															
90	-0,5					39,6	56,5	67,8	89,0	113	140	170	218	247	317	407														
100							62,8	75,4	98,9	126	155	188	242	275	352	452	565													
110							69,1	82,9	109,0	138	171	207	266	302	387	497	622	760												
125	-0,5							94,2	124,0	157	194	235	302	343	440	565	706	863	1100											
140								106,0	176	218	264	338	385	492	633	791	967	1240	1540											
160									158,0	201	249	301	387	440	563	723	904	1110	1410	1760	2080									
180	-0,5									226	280	339	435	495	633	815	1020	1240	1590	1980	2340	2750								
200											331	377	484	550	703	904	1130	1380	1770	2200	2600	3060	3800							
220												414	532	604	774	995	1240	1520	1940	2420	2860	3370	4180	5520						
250	-0,5												604	687	880	1130	1410	1730	2210	2750	3250	3830	4750	6280	7880					
280														769	985	1270	1580	1930	2470	3080	3640	4290	5320	7070	8820	11000				
320															1030	1440	1810	2210	2820	3510	4170	4900	6090	7930	10100	12600				
360	-0,5															1630	2040	2480	3180	3950	4690	5510	6850	9030	11350	14200				
400	-0,5																2260	2760	3530	4400	5200	6120	7600	10040	12600	15700				
Weight reduction Form A			0,013	0,045	0,108	0,211	0,364	0,755	1,350	1,940	2,970	4,310	6,000	8,090	11,400	14,7	21,1	31,1	43,7	59,3	85,3	118,0	169,0	214,0	198,0	433,0	615,0	844,0		

All dimensions in mm - weight in kg/1000 pcs.

# Parallel keys DIN 6885



A NOSTA - DEIMA Company



standard

DIN 6885

PART NO.	ITEM NO.								
	Surface			Form			Width	Height	Length
	Optional C45+C	1.4571	1.4057	Optional A	B	AB			
<b>2 x 2</b>	<b>Width x height: 2h9 x 2h9 (2-0,025 x 2-0,025)</b>								
6	8500	85X0	85R0	A	B	Z	02	02	006
8	8500	85X0	85R0	A	B	Z	02	02	008
10	8500	85X0	85R0	A	B	Z	02	02	010
12	8500	85X0	85R0	A	B	Z	02	02	012
14	8500	85X0	85R0	A	B	Z	02	02	014
15	8500	85X0	85R0	A	B	Z	02	02	015
16	8500	85X0	85R0	A	B	Z	02	02	016
18	8500	85X0	85R0	A	B	Z	02	02	018
20	8500	85X0	85R0	A	B	Z	02	02	020
22	8500	85X0	85R0	A	B	Z	02	02	022
25	8500	85X0	85R0	A	B	Z	02	02	025
30	8500	85X0	85R0	A	B	Z	02	02	030
32	8500	85X0	85R0	A	B	Z	02	02	040
<b>3 x 3</b>	<b>Width x height: 3h9 x 3h9 (3-0,025 x 3-0,025)</b>								
6	8500	85X0	85R0	A	B	Z	03	03	006
8	8500	85X0	85R0	A	B	Z	03	03	008
10	8500	85X0	85R0	A	B	Z	03	03	010
12	8500	85X0	85R0	A	B	Z	03	03	012
14	8500	85X0	85R0	A	B	Z	03	03	014
15	8500	85X0	85R0	A	B	Z	03	03	015
16	8500	85X0	85R0	A	B	Z	03	03	016
18	8500	85X0	85R0	A	B	Z	03	03	018
20	8500	85X0	85R0	A	B	Z	03	03	020
22	8500	85X0	85R0	A	B	Z	03	03	022
25	8500	85X0	85R0	A	B	Z	03	03	025
28	8500	85X0	85R0	A	B	Z	03	03	028
30	8500	85X0	85R0	A	B	Z	03	03	030
32	8500	85X0	85R0	A	B	Z	03	03	032
35	8500	85X0	85R0	A	B	Z	03	03	035
36	8500	85X0	85R0	A	B	Z	03	03	036
40	8500	85X0	85R0	A	B	Z	03	03	040
<b>4 x 4</b>	<b>Width x height: 4h9 x 4h9 (4-0,030 x 4-0,030)</b>								
6	8500	85X0	85R0	A	B	Z	04	04	006
8	8500	85X0	85R0	A	B	Z	04	04	008
10	8500	85X0	85R0	A	B	Z	04	04	010
12	8500	85X0	85R0	A	B	Z	04	04	012
14	8500	85X0	85R0	A	B	Z	04	04	014
15	8500	85X0	85R0	A	B	Z	04	04	015

**Order example**

Parallel key A 3 x 3 x 18, DIN 6885, material C45+C

Article no. **8500A0303018**



# Parallel keys DIN 6885



standard

DIN 6885

PART NO.	ITEM NO.								
	Surface			Form			Width	Height	Length
	Optional C45+C	1.4571	1.4057	Optional A B AB					
16	8500	85X0	85R0	A	B	Z	04	04	016
18	8500	85X0	85R0	A	B	Z	04	04	018
20	8500	85X0	85R0	A	B	Z	04	04	020
22	8500	85X0	85R0	A	B	Z	04	04	022
25	8500	85X0	85R0	A	B	Z	04	04	025
28	8500	85X0	85R0	A	B	Z	04	04	028
30	8500	85X0	85R0	A	B	Z	04	04	030
32	8500	85X0	85R0	A	B	Z	04	04	032
35	8500	85X0	85R0	A	B	Z	04	04	035
36	8500	85X0	85R0	A	B	Z	04	04	036
40	8500	85X0	85R0	A	B	Z	04	04	040
45	8500	85X0	85R0	A	B	Z	04	04	045
50	8500	85X0	85R0	A	B	Z	04	04	050
56	8500	85X0	85R0	A	B	Z	04	04	056
<b>5 x 3</b>	<b>Width x height: 5h9 x 3h11 (5-0,030 x 3-0,060)</b>								
10	8500	85X0	85R0	A	B	Z	05	03	010
12	8500	85X0	85R0	A	B	Z	05	03	012
14	8500	85X0	85R0	A	B	Z	05	03	014
16	8500	85X0	85R0	A	B	Z	05	03	016
18	8500	85X0	85R0	A	B	Z	05	03	018
20	8500	85X0	85R0	A	B	Z	05	03	020
22	8500	85X0	85R0	A	B	Z	05	03	022
25	8500	85X0	85R0	A	B	Z	05	03	025
28	8500	85X0	85R0	A	B	Z	05	03	028
30	8500	85X0	85R0	A	B	Z	05	03	030
32	8500	85X0	85R0	A	B	Z	05	03	032
36	8500	85X0	85R0	A	B	Z	05	03	036
<b>5 x 5</b>	<b>Width x height: 5h9 x 5h9 (5-0,030 x 5-0,030)</b>								
8	8500	85X0	85R0	A	B	Z	05	05	008
10	8500	85X0	85R0	A	B	Z	05	05	010
12	8500	85X0	85R0	A	B	Z	05	05	012
14	8500	85X0	85R0	A	B	Z	05	05	014
15	8500	85X0	85R0	A	B	Z	05	05	015
16	8500	85X0	85R0	A	B	Z	05	05	016
18	8500	85X0	85R0	A	B	Z	05	05	018
20	8500	85X0	85R0	A	B	Z	05	05	020
22	8500	85X0	85R0	A	B	Z	05	05	022
25	8500	85X0	85R0	A	B	Z	05	05	025
28	8500	85X0	85R0	A	B	Z	05	05	028
30	8500	85X0	85R0	A	B	Z	05	05	030

**ORDER EXAMPLE**

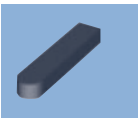
Parallel key B 5 x 3 x 28, DIN 6885, material 1.4571

**Article no. 85X0B0503028**

# Parallel keys DIN 6885



A NOSTA - DEIMA Company



standard

DIN 6885

PART NO.	ITEM NO.								
	Surface			Form			Width	Height	Length
	Optional C45+C	1.4571	1.4057	Optional A B AB					
32	8500	85X0	85R0	A	B	Z	05	05	032
35	8500	85X0	85R0	A	B	Z	05	05	035
36	8500	85X0	85R0	A	B	Z	05	05	036
40	8500	85X0	85R0	A	B	Z	05	05	040
45	8500	85X0	85R0	A	B	Z	05	05	045
50	8500	85X0	85R0	A	B	Z	05	05	050
55	8500	85X0	85R0	A	B	Z	05	05	055
56	8500	85X0	85R0	A	B	Z	05	05	056
60	8500	85X0	85R0	A	B	Z	05	05	060
63	8500	85X0	85R0	A	B	Z	05	05	063
65	8500	85X0	85R0	A	B	Z	05	05	065
70	8500	85X0	85R0	A	B	Z	05	05	070
80	8500	85X0	85R0	A	B	Z	05	05	080
<b>6 x 4</b>	<b>Width x height: 6h9 x 4h11 (6-0,030 x 4-0,075)</b>								
12	8500	85X0	85R0	A	B	Z	06	04	012
14	8500	85X0	85R0	A	B	Z	06	04	014
16	8500	85X0	85R0	A	B	Z	06	04	016
18	8500	85X0	85R0	A	B	Z	06	04	018
20	8500	85X0	85R0	A	B	Z	06	04	020
22	8500	85X0	85R0	A	B	Z	06	04	022
25	8500	85X0	85R0	A	B	Z	06	04	025
28	8500	85X0	85R0	A	B	Z	06	04	028
30	8500	85X0	85R0	A	B	Z	06	04	030
32	8500	85X0	85R0	A	B	Z	06	04	032
36	8500	85X0	85R0	A	B	Z	06	04	036
40	8500	85X0	85R0	A	B	Z	06	04	040
45	8500	85X0	85R0	A	B	Z	06	04	045
50	8500	85X0	85R0	A	B	Z	06	04	050
70	8500	85X0	85R0	A	B	Z	06	04	070
<b>6 x 6</b>	<b>Width x height: 6h9 x 6h9 (6-0,030 x 6-0,030)</b>								
10	8500	85X0	85R0	A	B	Z	06	06	010
12	8500	85X0	85R0	A	B	Z	06	06	012
14	8500	85X0	85R0	A	B	Z	06	06	014
15	8500	85X0	85R0	A	B	Z	06	06	015
16	8500	85X0	85R0	A	B	Z	06	06	016
18	8500	85X0	85R0	A	B	Z	06	06	018
20	8500	85X0	85R0	A	B	Z	06	06	020
22	8500	85X0	85R0	A	B	Z	06	06	022
24	8500	85X0	85R0	A	B	Z	06	06	024
25	8500	85X0	85R0	A	B	Z	06	06	025

**ORDER EXAMPLE**

Parallel key AB 6 x 4 x 32, DIN 6885, material 1.4057

Article no. **85R0Z0604032**





# Parallel keys DIN 6885



A NOSTA - DEMA Company

standard

DIN 6885

PART NO.	ITEM NO.								
	Surface			Form			Width	Height	Length
	Optional C45+C	1.4571	1.4057	Optional A	B	AB			
28	8500	85X0	85R0	A	B	Z	06	06	028
30	8500	85X0	85R0	A	B	Z	06	06	030
32	8500	85X0	85R0	A	B	Z	06	06	032
35	8500	85X0	85R0	A	B	Z	06	06	035
36	8500	85X0	85R0	A	B	Z	06	06	036
40	8500	85X0	85R0	A	B	Z	06	06	040
45	8500	85X0	85R0	A	B	Z	06	06	045
50	8500	85X0	85R0	A	B	Z	06	06	050
55	8500	85X0	85R0	A	B	Z	06	06	055
56	8500	85X0	85R0	A	B	Z	06	06	056
60	8500	85X0	85R0	A	B	Z	06	06	060
63	8500	85X0	85R0	A	B	Z	06	06	063
65	8500	85X0	85R0	A	B	Z	06	06	065
70	8500	85X0	85R0	A	B	Z	06	06	070
75	8500	85X0	85R0	A	B	Z	06	06	075
80	8500	85X0	85R0	A	B	Z	06	06	080
90	8500	85X0	85R0	A	B	Z	06	06	090
100	8500	85X0	85R0	A	B	Z	06	06	100
110	8500	85X0	85R0	A	B	Z	06	06	110
<b>8 x 5</b>	<b>Width x height: 8h9 x 5h11 (8-0,036 x 5-0,075)</b>								
12	8500	85X0	85R0	A	B	Z	08	05	012
14	8500	85X0	85R0	A	B	Z	08	05	014
15	8500	85X0	85R0	A	B	Z	08	05	015
16	8500	85X0	85R0	A	B	Z	08	05	016
18	8500	85X0	85R0	A	B	Z	08	05	018
20	8500	85X0	85R0	A	B	Z	08	05	020
22	8500	85X0	85R0	A	B	Z	08	05	022
25	8500	85X0	85R0	A	B	Z	08	05	025
28	8500	85X0	85R0	A	B	Z	08	05	028
30	8500	85X0	85R0	A	B	Z	08	05	030
32	8500	85X0	85R0	A	B	Z	08	05	032
35	8500	85X0	85R0	A	B	Z	08	05	035
36	8500	85X0	85R0	A	B	Z	08	05	036
40	8500	85X0	85R0	A	B	Z	08	05	040
45	8500	85X0	85R0	A	B	Z	08	05	045
50	8500	85X0	85R0	A	B	Z	08	05	050
56	8500	85X0	85R0	A	B	Z	08	05	056
63	8500	85X0	85R0	A	B	Z	08	05	063
80	8500	85X0	85R0	A	B	Z	08	05	080
90	8500	85X0	85R0	A	B	Z	08	05	090

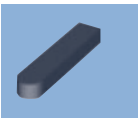
**ORDER EXAMPLE**

Parallel key B 8 x 5 x 16, DIN 6885, material C45+C  
**Article no. 8500B0805016**

# Parallel keys DIN 6885



A NOSTA - DEIMA Company



standard

DIN 6885

PART NO.	ITEM NO.								
	Surface			Form			Width	Height	Length
	Optional C45+C	1.4571	1.4057	Optional A	B	AB			
<b>8 x 7</b>	<b>Width x height: 8h9 x 7h11 (8-0,036 x 7-0,090)</b>								
10	8500	85X0	85R0	A	B	Z	08	07	010
12	8500	85X0	85R0	A	B	Z	08	07	012
14	8500	85X0	85R0	A	B	Z	08	07	014
15	8500	85X0	85R0	A	B	Z	08	07	015
16	8500	85X0	85R0	A	B	Z	08	07	016
18	8500	85X0	85R0	A	B	Z	08	07	018
20	8500	85X0	85R0	A	B	Z	08	07	020
22	8500	85X0	85R0	A	B	Z	08	07	022
25	8500	85X0	85R0	A	B	Z	08	07	025
28	8500	85X0	85R0	A	B	Z	08	07	028
30	8500	85X0	85R0	A	B	Z	08	07	030
32	8500	85X0	85R0	A	B	Z	08	07	032
35	8500	85X0	85R0	A	B	Z	08	07	035
36	8500	85X0	85R0	A	B	Z	08	07	036
40	8500	85X0	85R0	A	B	Z	08	07	040
45	8500	85X0	85R0	A	B	Z	08	07	045
50	8500	85X0	85R0	A	B	Z	08	07	050
55	8500	85X0	85R0	A	B	Z	08	07	055
56	8500	85X0	85R0	A	B	Z	08	07	056
60	8500	85X0	85R0	A	B	Z	08	07	060
63	8500	85X0	85R0	A	B	Z	08	07	063
65	8500	85X0	85R0	A	B	Z	08	07	065
70	8500	85X0	85R0	A	B	Z	08	07	070
75	8500	85X0	85R0	A	B	Z	08	07	075
80	8500	85X0	85R0	A	B	Z	08	07	080
85	8500	85X0	85R0	A	B	Z	08	07	085
90	8500	85X0	85R0	A	B	Z	08	07	090
95	8500	85X0	85R0	A	B	Z	08	07	095
100	8500	85X0	85R0	A	B	Z	08	07	100
110	8500	85X0	85R0	A	B	Z	08	07	110
120	8500	85X0	85R0	A	B	Z	08	07	120
125	8500	85X0	85R0	A	B	Z	08	07	125
130	8500	85X0	85R0	A	B	Z	08	07	130
140	8500	85X0	85R0	A	B	Z	08	07	140
150	8500	85X0	85R0	A	B	Z	08	07	150
160	8500	85X0	85R0	A	B	Z	08	07	160
180	8500	85X0	85R0	A	B	Z	08	07	180
200	8500	85X0	85R0	A	B	Z	08	07	200

**ORDER EXAMPLE**  
 Parallel key AB 8 x 7 x 70, DIN 6885, material C45+C  
**Article no. 8500Z0807070**



# Parallel keys DIN 6885



standard

DIN 6885

PART NO.	ITEM NO.								
	Surface			Form			Width	Height	Length
	Optional C45+C	1.4571	1.4057	Optional A	B	AB			
<b>10 x 6</b>	<b>Width x height: 10h9 x 6h11 (10-0,036 x 6-0,075)</b>								
20	8500	85X0	85R0	A	B	Z	10	06	020
22	8500	85X0	85R0	A	B	Z	10	06	022
25	8500	85X0	85R0	A	B	Z	10	06	025
28	8500	85X0	85R0	A	B	Z	10	06	028
30	8500	85X0	85R0	A	B	Z	10	06	030
32	8500	85X0	85R0	A	B	Z	10	06	032
36	8500	85X0	85R0	A	B	Z	10	06	036
40	8500	85X0	85R0	A	B	Z	10	06	040
50	8500	85X0	85R0	A	B	Z	10	06	050
60	8500	85X0	85R0	A	B	Z	10	06	060
70	8500	85X0	85R0	A	B	Z	10	06	070
80	8500	85X0	85R0	A	B	Z	10	06	080
100	8500	85X0	85R0	A	B	Z	10	06	100
<b>10 x 8</b>	<b>Width x height: 10h9 x 8h11 (10-0,036 x 8-0,090)</b>								
14	8500	85X0	85R0	A	B	Z	10	08	014
15	8500	85X0	85R0	A	B	Z	10	08	015
16	8500	85X0	85R0	A	B	Z	10	08	016
18	8500	85X0	85R0	A	B	Z	10	08	018
20	8500	85X0	85R0	A	B	Z	10	08	020
22	8500	85X0	85R0	A	B	Z	10	08	022
25	8500	85X0	85R0	A	B	Z	10	08	025
28	8500	85X0	85R0	A	B	Z	10	08	028
30	8500	85X0	85R0	A	B	Z	10	08	030
32	8500	85X0	85R0	A	B	Z	10	08	032
35	8500	85X0	85R0	A	B	Z	10	08	035
36	8500	85X0	85R0	A	B	Z	10	08	036
40	8500	85X0	85R0	A	B	Z	10	08	040
45	8500	85X0	85R0	A	B	Z	10	08	045
50	8500	85X0	85R0	A	B	Z	10	08	050
55	8500	85X0	85R0	A	B	Z	10	08	055
56	8500	85X0	85R0	A	B	Z	10	08	056
60	8500	85X0	85R0	A	B	Z	10	08	060
63	8500	85X0	85R0	A	B	Z	10	08	063
65	8500	85X0	85R0	A	B	Z	10	08	065
70	8500	85X0	85R0	A	B	Z	10	08	070
75	8500	85X0	85R0	A	B	Z	10	08	075
80	8500	85X0	85R0	A	B	Z	10	08	080
85	8500	85X0	85R0	A	B	Z	10	08	085
90	8500	85X0	85R0	A	B	Z	10	08	090

**ORDER EXAMPLE**

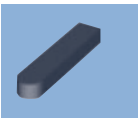
Parallel key B 10 x 8 x 30, DIN 6885, material 1.4057

**Article no. 85R0B1008030**

# Parallel keys DIN 6885



A NOSTA - DEIMA Company



standard

DIN 6885

PART NO.	ITEM NO.								
	Surface			Form			Width	Height	Length
	Optional C45+C	1.4571	1.4057	Optional A B AB					
95	8500	85X0	85R0	A	B	Z	10	08	095
100	8500	85X0	85R0	A	B	Z	10	08	100
110	8500	85X0	85R0	A	B	Z	10	08	110
120	8500	85X0	85R0	A	B	Z	10	08	120
125	8500	85X0	85R0	A	B	Z	10	08	125
130	8500	85X0	85R0	A	B	Z	10	08	130
140	8500	85X0	85R0	A	B	Z	10	08	140
150	8500	85X0	85R0	A	B	Z	10	08	150
160	8500	85X0	85R0	A	B	Z	10	08	160
200	8500	85X0	85R0	A	B	Z	10	08	200
220	8500	85X0	85R0	A	B	Z	10	08	220
<b>12 x 6</b>	<b>Width x height: 12h9 x 6h11 (12-0,043 x 6-0,075)</b>								
25	8500	85X0	85R0	A	B	Z	12	06	025
28	8500	85X0	85R0	A	B	Z	12	06	028
30	8500	85X0	85R0	A	B	Z	12	06	030
32	8500	85X0	85R0	A	B	Z	12	06	032
40	8500	85X0	85R0	A	B	Z	12	06	040
50	8500	85X0	85R0	A	B	Z	12	06	050
80	8500	85X0	85R0	A	B	Z	12	06	080
100	8500	85X0	85R0	A	B	Z	12	06	100
<b>12 x 8</b>	<b>Width x height: 12h9 x 8h11 (12-0,043 x 8-0,090)</b>								
20	8500	85X0	85R0	A	B	Z	12	08	020
22	8500	85X0	85R0	A	B	Z	12	08	022
25	8500	85X0	85R0	A	B	Z	12	08	025
28	8500	85X0	85R0	A	B	Z	12	08	028
30	8500	85X0	85R0	A	B	Z	12	08	030
32	8500	85X0	85R0	A	B	Z	12	08	032
35	8500	85X0	85R0	A	B	Z	12	08	035
36	8500	85X0	85R0	A	B	Z	12	08	036
40	8500	85X0	85R0	A	B	Z	12	08	040
45	8500	85X0	85R0	A	B	Z	12	08	045
50	8500	85X0	85R0	A	B	Z	12	08	050
55	8500	85X0	85R0	A	B	Z	12	08	055
56	8500	85X0	85R0	A	B	Z	12	08	056
60	8500	85X0	85R0	A	B	Z	12	08	060
63	8500	85X0	85R0	A	B	Z	12	08	063
65	8500	85X0	85R0	A	B	Z	12	08	065
70	8500	85X0	85R0	A	B	Z	12	08	070
75	8500	85X0	85R0	A	B	Z	12	08	075
80	8500	85X0	85R0	A	B	Z	12	08	080

**ORDER EXAMPLE**  
 Parallel key AB 12 x 8 x 25, DIN 6885, material 1.4571  
**Article no. 85X0Z1208025**



# Parallel keys DIN 6885



standard

DIN 6885

PART NO.	ITEM NO.								
	Surface			Form			Width	Height	Length
	Optional C45+C	1.4571	1.4057	Optional A	B	AB			
85	8500	85X0	85R0	A	B	Z	12	08	085
90	8500	85X0	85R0	A	B	Z	12	08	090
95	8500	85X0	85R0	A	B	Z	12	08	095
100	8500	85X0	85R0	A	B	Z	12	08	100
110	8500	85X0	85R0	A	B	Z	12	08	110
120	8500	85X0	85R0	A	B	Z	12	08	120
125	8500	85X0	85R0	A	B	Z	12	08	125
130	8500	85X0	85R0	A	B	Z	12	08	130
140	8500	85X0	85R0	A	B	Z	12	08	140
150	8500	85X0	85R0	A	B	Z	12	08	150
160	8500	85X0	85R0	A	B	Z	12	08	160
170	8500	85X0	85R0	A	B	Z	12	08	170
180	8500	85X0	85R0	A	B	Z	12	08	180
200	8500	85X0	85R0	A	B	Z	12	08	200
<b>14 x 6</b>	<b>Width x height: 14h9 x 6h11 (14-0,043 x 6-0,075)</b>								
30	8500	85X0	85R0	A	B	Z	14	06	030
32	8500	85X0	85R0	A	B	Z	14	06	032
36	8500	85X0	85R0	A	B	Z	14	06	036
45	8500	85X0	85R0	A	B	Z	14	06	045
50	8500	85X0	85R0	A	B	Z	14	06	050
70	8500	85X0	85R0	A	B	Z	14	06	070
<b>14 x 9</b>	<b>Width x height: 14h9 x 9h11 (14-0,043 x 9-0,090)</b>								
22	8500	85X0	85R0	A	B	Z	14	09	022
25	8500	85X0	85R0	A	B	Z	14	09	025
28	8500	85X0	85R0	A	B	Z	14	09	028
30	8500	85X0	85R0	A	B	Z	14	09	030
32	8500	85X0	85R0	A	B	Z	14	09	032
35	8500	85X0	85R0	A	B	Z	14	09	035
36	8500	85X0	85R0	A	B	Z	14	09	036
40	8500	85X0	85R0	A	B	Z	14	09	040
45	8500	85X0	85R0	A	B	Z	14	09	045
50	8500	85X0	85R0	A	B	Z	14	09	050
55	8500	85X0	85R0	A	B	Z	14	09	055
56	8500	85X0	85R0	A	B	Z	14	09	056
60	8500	85X0	85R0	A	B	Z	14	09	060
63	8500	85X0	85R0	A	B	Z	14	09	063
65	8500	85X0	85R0	A	B	Z	14	09	065
70	8500	85X0	85R0	A	B	Z	14	09	070
75	8500	85X0	85R0	A	B	Z	14	09	075
80	8500	85X0	85R0	A	B	Z	14	09	080

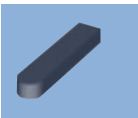
**ORDER EXAMPLE**

Parallel key B 14 x 9 x 25, DIN 6885, material C45+C  
**Article no. 8500B1409025**

# Parallel keys DIN 6885



A NOSTA - DEIMA Company



standard

DIN 6885

PART NO.	ITEM NO.								
	Surface			Form			Width	Height	Length
	Optional C45+C	1.4571	1.4057	Optional A	B	AB			
85	8500	85X0	85R0	A	B	Z	14	09	085
90	8500	85X0	85R0	A	B	Z	14	09	090
95	8500	85X0	85R0	A	B	Z	14	09	095
100	8500	85X0	85R0	A	B	Z	14	09	100
110	8500	85X0	85R0	A	B	Z	14	09	110
120	8500	85X0	85R0	A	B	Z	14	09	120
125	8500	85X0	85R0	A	B	Z	14	09	125
130	8500	85X0	85R0	A	B	Z	14	09	130
140	8500	85X0	85R0	A	B	Z	14	09	140
150	8500	85X0	85R0	A	B	Z	14	09	150
160	8500	85X0	85R0	A	B	Z	14	09	160
170	8500	85X0	85R0	A	B	Z	14	09	170
180	8500	85X0	85R0	A	B	Z	14	09	180
200	8500	85X0	85R0	A	B	Z	14	09	200
<b>16 x 7</b>	<b>Width x height: 16h9 x 7h11 (16-0,043 x 7-0,090)</b>								
50	8500	85X0	85R0	A	B	Z	16	07	050
63	8500	85X0	85R0	A	B	Z	16	07	063
<b>16 x 10</b>	<b>Width x height: 16h9 x 10h11 (16-0,043 x 10-0,090)</b>								
30	8500	85X0	85R0	A	B	Z	16	10	030
32	8500	85X0	85R0	A	B	Z	16	10	032
35	8500	85X0	85R0	A	B	Z	16	10	035
36	8500	85X0	85R0	A	B	Z	16	10	036
40	8500	85X0	85R0	A	B	Z	16	10	040
45	8500	85X0	85R0	A	B	Z	16	10	045
50	8500	85X0	85R0	A	B	Z	16	10	050
55	8500	85X0	85R0	A	B	Z	16	10	055
56	8500	85X0	85R0	A	B	Z	16	10	056
60	8500	85X0	85R0	A	B	Z	16	10	060
63	8500	85X0	85R0	A	B	Z	16	10	063
65	8500	85X0	85R0	A	B	Z	16	10	065
70	8500	85X0	85R0	A	B	Z	16	10	070
75	8500	85X0	85R0	A	B	Z	16	10	075
80	8500	85X0	85R0	A	B	Z	16	10	080
85	8500	85X0	85R0	A	B	Z	16	10	085
90	8500	85X0	85R0	A	B	Z	16	10	090
95	8500	85X0	85R0	A	B	Z	16	10	095
100	8500	85X0	85R0	A	B	Z	16	10	100
110	8500	85X0	85R0	A	B	Z	16	10	110
120	8500	85X0	85R0	A	B	Z	16	10	120
125	8500	85X0	85R0	A	B	Z	16	10	125

**ORDER EXAMPLE**  
 Parallel key A 16 x 10 x 45, DIN 6885, material C45+C  
**Article no. 8500A1610045**



# Parallel keys DIN 6885



standard

DIN 6885

PART NO.	ITEM NO.								
	Surface			Form			Width	Height	Length
	Optional C45+C	1.4571	1.4057	Optional A	B	AB			
130	8500	85X0	85R0	A	B	Z	16	10	130
140	8500	85X0	85R0	A	B	Z	16	10	140
150	8500	85X0	85R0	A	B	Z	16	10	150
160	8500	85X0	85R0	A	B	Z	16	10	160
180	8500	85X0	85R0	A	B	Z	16	10	180
200	8500	85X0	85R0	A	B	Z	16	10	200
<b>18 x 11</b>	<b>Width x height: 18h9 x 11h11 (18-0,043 x 11-0,110)</b>								
30	8500	85X0	85R0	A	B	Z	18	11	30
35	8500	85X0	85R0	A	B	Z	18	11	35
40	8500	85X0	85R0	A	B	Z	18	11	40
45	8500	85X0	85R0	A	B	Z	18	11	045
50	8500	85X0	85R0	A	B	Z	18	11	050
55	8500	85X0	85R0	A	B	Z	18	11	055
56	8500	85X0	85R0	A	B	Z	18	11	056
60	8500	85X0	85R0	A	B	Z	18	11	060
63	8500	85X0	85R0	A	B	Z	18	11	063
65	8500	85X0	85R0	A	B	Z	18	11	065
70	8500	85X0	85R0	A	B	Z	18	11	070
75	8500	85X0	85R0	A	B	Z	18	11	075
80	8500	85X0	85R0	A	B	Z	18	11	080
85	8500	85X0	85R0	A	B	Z	18	11	085
90	8500	85X0	85R0	A	B	Z	18	11	090
95	8500	85X0	85R0	A	B	Z	18	11	095
100	8500	85X0	85R0	A	B	Z	18	11	100
110	8500	85X0	85R0	A	B	Z	18	11	110
120	8500	85X0	85R0	A	B	Z	18	11	120
125	8500	85X0	85R0	A	B	Z	18	11	125
130	8500	85X0	85R0	A	B	Z	18	11	130
140	8500	85X0	85R0	A	B	Z	18	11	140
150	8500	85X0	85R0	A	B	Z	18	11	150
160	8500	85X0	85R0	A	B	Z	18	11	160
170	8500	85X0	85R0	A	B	Z	18	11	170
180	8500	85X0	85R0	A	B	Z	18	11	180
200	8500	85X0	85R0	A	B	Z	18	11	200
220	8500	85X0	85R0	A	B	Z	18	11	220
<b>20 x 12</b>	<b>Width x height: 20h9 x 12h11 (20-0,052 x 12-0,110)</b>								
35	8500	85X0	85R0	A	B	Z	20	12	035
40	8500	85X0	85R0	A	B	Z	20	12	040
45	8500	85X0	85R0	A	B	Z	20	12	045
50	8500	85X0	85R0	A	B	Z	20	12	050

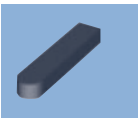
**ORDER EXAMPLE**

Article no. B 18 x 11 x 100, DIN 6885, material 1.4057  
**Article no. 85R0B1811100**

# Parallel keys DIN 6885



A NOSTA - DEIMA Company



standard

DIN 6885

PART NO.	ITEM NO.								
	Surface			Form			Width	Height	Length
	Optional C45+C	1.4571	1.4057	Optional					
			A	B	AB				
55	8500	85X0	85R0	A	B	Z	20	12	055
56	8500	85X0	85R0	A	B	Z	20	12	056
60	8500	85X0	85R0	A	B	Z	20	12	060
63	8500	85X0	85R0	A	B	Z	20	12	063
65	8500	85X0	85R0	A	B	Z	20	12	065
70	8500	85X0	85R0	A	B	Z	20	12	070
75	8500	85X0	85R0	A	B	Z	20	12	075
80	8500	85X0	85R0	A	B	Z	20	12	080
85	8500	85X0	85R0	A	B	Z	20	12	085
90	8500	85X0	85R0	A	B	Z	20	12	090
95	8500	85X0	85R0	A	B	Z	20	12	095
100	8500	85X0	85R0	A	B	Z	20	12	100
110	8500	85X0	85R0	A	B	Z	20	12	110
120	8500	85X0	85R0	A	B	Z	20	12	120
125	8500	85X0	85R0	A	B	Z	20	12	125
130	8500	85X0	85R0	A	B	Z	20	12	130
140	8500	85X0	85R0	A	B	Z	20	12	140
150	8500	85X0	85R0	A	B	Z	20	12	150
160	8500	85X0	85R0	A	B	Z	20	12	160
170	8500	85X0	85R0	A	B	Z	20	12	170
180	8500	85X0	85R0	A	B	Z	20	12	180
200	8500	85X0	85R0	A	B	Z	20	12	200
220	8500	85X0	85R0	A	B	Z	20	12	220
250	8500	85X0	85R0	A	B	Z	20	12	250
<b>22x14</b>	<b>Width x height: 22h9 x 14h11 (22-0,052 x 14-0,110)</b>								
40	8500	85X0	85R0	A	B	Z	22	14	040
50	8500	85X0	85R0	A	B	Z	22	14	050
55	8500	85X0	85R0	A	B	Z	22	14	055
56	8500	85X0	85R0	A	B	Z	22	14	056
60	8500	85X0	85R0	A	B	Z	22	14	060
63	8500	85X0	85R0	A	B	Z	22	14	063
65	8500	85X0	85R0	A	B	Z	22	14	065
70	8500	85X0	85R0	A	B	Z	22	14	070
75	8500	85X0	85R0	A	B	Z	22	14	075
80	8500	85X0	85R0	A	B	Z	22	14	080
85	8500	85X0	85R0	A	B	Z	22	14	085
90	8500	85X0	85R0	A	B	Z	22	14	090
100	8500	85X0	85R0	A	B	Z	22	14	100
110	8500	85X0	85R0	A	B	Z	22	14	110
120	8500	85X0	85R0	A	B	Z	22	14	120

**ORDER EXAMPLE**  
 Parallel key AB 20 x 12 x 250, DIN 6885, material 1.4571  
**Article no. 85X0Z2012250**





# Parallel keys DIN 6885



standard

DIN 6885

PART NO.	ITEM NO.								
	Surface			Form			Width	Height	Length
	Optional C45+C	1.4571	1.4057	Optional A	B	AB			
125	8500	85X0	85R0	A	B	Z	22	14	125
130	8500	85X0	85R0	A	B	Z	22	14	130
140	8500	85X0	85R0	A	B	Z	22	14	140
150	8500	85X0	85R0	A	B	Z	22	14	150
160	8500	85X0	85R0	A	B	Z	22	14	160
170	8500	85X0	85R0	A	B	Z	22	14	170
180	8500	85X0	85R0	A	B	Z	22	14	180
200	8500	85X0	85R0	A	B	Z	22	14	200
220	8500	85X0	85R0	A	B	Z	22	14	220
250	8500	85X0	85R0	A	B	Z	22	14	250
280	8500	85X0	85R0	A	B	Z	22	14	280
<b>25x14</b>	<b>Width x height: 25h9 x 14h11 (25-0,052 x 14-0,110)</b>								
56	8500	85X0	85R0	A	B	Z	25	14	056
60	8500	85X0	85R0	A	B	Z	25	14	060
63	8500	85X0	85R0	A	B	Z	25	14	063
65	8500	85X0	85R0	A	B	Z	25	14	065
70	8500	85X0	85R0	A	B	Z	25	14	070
75	8500	85X0	85R0	A	B	Z	25	14	075
80	8500	85X0	85R0	A	B	Z	25	14	080
85	8500	85X0	85R0	A	B	Z	25	14	085
90	8500	85X0	85R0	A	B	Z	25	14	090
100	8500	85X0	85R0	A	B	Z	25	14	100
110	8500	85X0	85R0	A	B	Z	25	14	110
120	8500	85X0	85R0	A	B	Z	25	14	120
125	8500	85X0	85R0	A	B	Z	25	14	125
130	8500	85X0	85R0	A	B	Z	25	14	130
140	8500	85X0	85R0	A	B	Z	25	14	140
150	8500	85X0	85R0	A	B	Z	25	14	150
160	8500	85X0	85R0	A	B	Z	25	14	160
170	8500	85X0	85R0	A	B	Z	25	14	170
180	8500	85X0	85R0	A	B	Z	25	14	180
200	8500	85X0	85R0	A	B	Z	25	14	200
220	8500	85X0	85R0	A	B	Z	25	14	220
250	8500	85X0	85R0	A	B	Z	25	14	250
280	8500	85X0	85R0	A	B	Z	25	14	280
<b>28x16</b>	<b>Width x height: 28h9 x 16h11 (28-0,052 x 16-0,110)</b>								
60	8500	85X0	85R0	A	B	Z	28	16	060
63	8500	85X0	85R0	A	B	Z	28	16	063
70	8500	85X0	85R0	A	B	Z	28	16	070
80	8500	85X0	85R0	A	B	Z	28	16	080

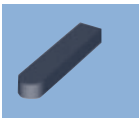
**ORDER EXAMPLE**

Article no. B 25 x 14 x 120, DIN 6885, material C45+C  
**Article no. 8500B2514120**

# Parallel keys DIN 6885



A NOSTA - DEIMA Company



standard

DIN 6885

PART NO.	ITEM NO.								
	Surface			Form			Width	Height	Length
	Optional C45+C	1.4571	1.4057	Optional A B AB					
90	8500	85X0	85R0	A	B	Z	28	16	090
95	8500	85X0	85R0	A	B	Z	28	16	095
100	8500	85X0	85R0	A	B	Z	28	16	100
110	8500	85X0	85R0	A	B	Z	28	16	110
120	8500	85X0	85R0	A	B	Z	28	16	120
125	8500	85X0	85R0	A	B	Z	28	16	125
130	8500	85X0	85R0	A	B	Z	28	16	130
140	8500	85X0	85R0	A	B	Z	28	16	140
150	8500	85X0	85R0	A	B	Z	28	16	150
160	8500	85X0	85R0	A	B	Z	28	16	160
170	8500	85X0	85R0	A	B	Z	28	16	170
180	8500	85X0	85R0	A	B	Z	28	16	180
200	8500	85X0	85R0	A	B	Z	28	16	200
220	8500	85X0	85R0	A	B	Z	28	16	220
250	8500	85X0	85R0	A	B	Z	28	16	250
280	8500	85X0	85R0	A	B	Z	28	16	280
320	8500	85X0	85R0	A	B	Z	28	16	320
<b>32 x 18</b>	<b>Width x height: 32h9 x 18h11 (32-0,062 x 18-0,110)</b>								
70	8500	85X0	85R0	A	B	Z	32	18	070
80	8500	85X0	85R0	A	B	Z	32	18	080
85	8500	85X0	85R0	A	B	Z	32	18	085
90	8500	85X0	85R0	A	B	Z	32	18	090
100	8500	85X0	85R0	A	B	Z	32	18	100
110	8500	85X0	85R0	A	B	Z	32	18	110
120	8500	85X0	85R0	A	B	Z	32	18	120
125	8500	85X0	85R0	A	B	Z	32	18	125
130	8500	85X0	85R0	A	B	Z	32	18	130
140	8500	85X0	85R0	A	B	Z	32	18	140
150	8500	85X0	85R0	A	B	Z	32	18	150
160	8500	85X0	85R0	A	B	Z	32	18	160
170	8500	85X0	85R0	A	B	Z	32	18	170
180	8500	85X0	85R0	A	B	Z	32	18	180
200	8500	85X0	85R0	A	B	Z	32	18	200
220	8500	85X0	85R0	A	B	Z	32	18	220
250	8500	85X0	85R0	A	B	Z	32	18	250
280	8500	85X0	85R0	A	B	Z	32	18	280
320	8500	85X0	85R0	A	B	Z	32	18	320
360	8500	85X0	85R0	A	B	Z	32	18	360

**ORDER EXAMPLE**  
 Article no. A 32 x 18 x 110, DIN 6885, material 1.4571  
**Article no. 85X0A3218110**



# Parallel keys DIN 6885



A NOSTA - DEMA Company

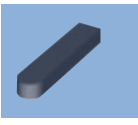
standard

PART NO.	ITEM NO.								
	Surface			Form			Width	Height	Length
	Optional C45+C	1.4571	1.4057	Optional A	B	AB			
<b>36 x 20</b>	<b>Width x height: 36h9 x 20h11 (36-0,062 x 20-0,130)</b>								
80	8500	85X0	85R0	A	B	Z	36	20	080
90	8500	85X0	85R0	A	B	Z	36	20	090
100	8500	85X0	85R0	A	B	Z	36	20	100
110	8500	85X0	85R0	A	B	Z	36	20	110
120	8500	85X0	85R0	A	B	Z	36	20	120
125	8500	85X0	85R0	A	B	Z	36	20	125
130	8500	85X0	85R0	A	B	Z	36	20	130
140	8500	85X0	85R0	A	B	Z	36	20	140
150	8500	85X0	85R0	A	B	Z	36	20	150
160	8500	85X0	85R0	A	B	Z	36	20	160
170	8500	85X0	85R0	A	B	Z	36	20	170
180	8500	85X0	85R0	A	B	Z	36	20	180
200	8500	85X0	85R0	A	B	Z	36	20	200
220	8500	85X0	85R0	A	B	Z	36	20	220
250	8500	85X0	85R0	A	B	Z	36	20	250
280	8500	85X0	85R0	A	B	Z	36	20	280
320	8500	85X0	85R0	A	B	Z	36	20	320
360	8500	85X0	85R0	A	B	Z	36	20	360
<b>40 x 22</b>	<b>Width x height: 40h9 x 22h11 (40-0,062 x 22-0,130)</b>								
90	8500	85X0	85R0	A	B	Z	40	22	090
100	8500	85X0	85R0	A	B	Z	40	22	100
110	8500	85X0	85R0	A	B	Z	40	22	110
120	8500	85X0	85R0	A	B	Z	40	22	120
125	8500	85X0	85R0	A	B	Z	40	22	125
140	8500	85X0	85R0	A	B	Z	40	22	140
160	8500	85X0	85R0	A	B	Z	40	22	160
180	8500	85X0	85R0	A	B	Z	40	22	180
200	8500	85X0	85R0	A	B	Z	40	22	200
220	8500	85X0	85R0	A	B	Z	40	22	220
250	8500	85X0	85R0	A	B	Z	40	22	250
280	8500	85X0	85R0	A	B	Z	40	22	280
320	8500	85X0	85R0	A	B	Z	40	22	320

**ORDER EXAMPLE**

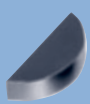
Article no. B 40 x 22 x 120, DIN 6885, material 1.4057  
**Article no. 85R0B4022120**

# Parallel keys DIN 6885

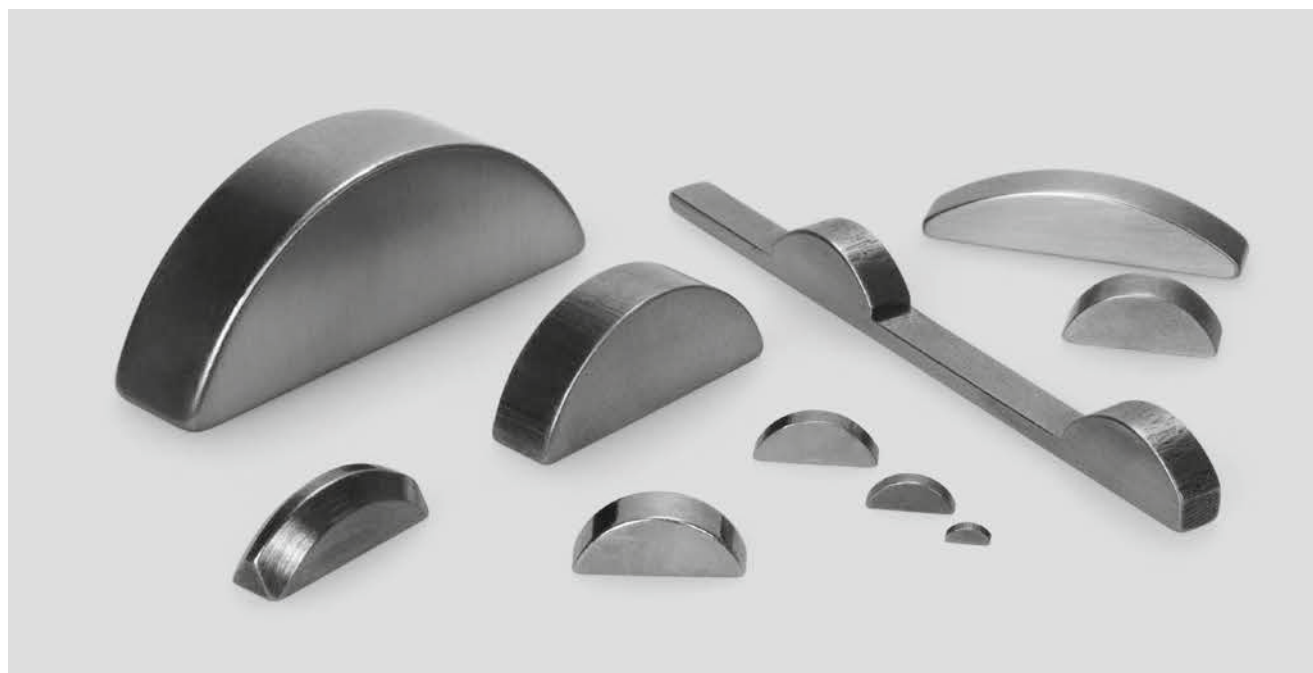


standard

PART NO.	ITEM NO.								
	Surface			Form			Width	Height	Length
	Optional C45+C	1.4571	1.4057	Optional A	B	AB			
<b>45 x 25</b>	<b>Width x height: 45h9 x 25h11 (45-0,062 x 25-0,130)</b>								
125	8500	85X0	85R0	A	B	Z	45	25	125
140	8500	85X0	85R0	A	B	Z	45	25	140
160	8500	85X0	85R0	A	B	Z	45	25	160
180	8500	85X0	85R0	A	B	Z	45	25	180
200	8500	85X0	85R0	A	B	Z	45	25	200
220	8500	85X0	85R0	A	B	Z	45	25	220
250	8500	85X0	85R0	A	B	Z	45	25	250
280	8500	85X0	85R0	A	B	Z	45	25	280
320	8500	85X0	85R0	A	B	Z	45	25	320
360	8500	85X0	85R0	A	B	Z	45	25	360



# Woodruff Keys DIN 6888

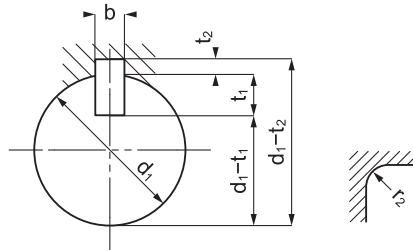
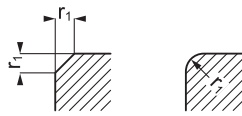
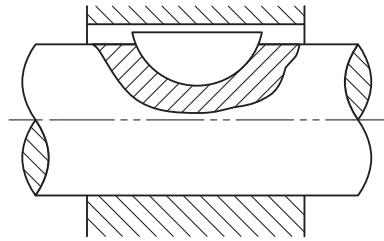
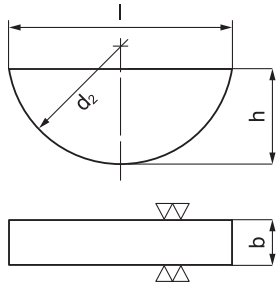
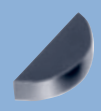


## Explanation of part numbers

12,65	880004,005			04,0	05
15,72	880004,006,5		88R004,006,5	04,0	06,5
18,57	880004,007,5		88R004,007,5	04,0	07,5

<b>88</b>	<b>X</b>	<b>0</b>	<b>04</b>	<b>005</b>
product group DIN 6888	material e.g. 1.4571	tolerance	width	height
88 = DIN 6888	0 = C45+C X = 1.4571 R = 1.4057			

= part number



Sf.-Maß b x h	d1	d2
1,5x2,6	4 <sup>1</sup> 6	7
2x2,6	6 <sup>1</sup> 8	7
2x3,7	6 <sup>1</sup> 8	10
2,5x3,7	8 <sup>1</sup> 10	10
3x3,7	8 <sup>1</sup> 10	10
2x5		13
3x5	8 <sup>1</sup> 10	13
4x5	10 <sup>1</sup> 12	13
3x6,5		16
4x6,5	10 <sup>1</sup> 12	16
5x6,5	12 <sup>1</sup> 17	16
4x7,5		19
5x7,5	12 <sup>1</sup> 17	19
6x7,5	17 <sup>1</sup> 22	19
5x9		22
6x9	17 <sup>1</sup> 22	22
8x9	22 <sup>1</sup> 30	22
5x10		25
6x10	17 <sup>1</sup> 22	25
7x10		25
6x11		28
8x11	22 <sup>1</sup> 30	28
10x11	30 <sup>1</sup> 38	28
8x13		32
10x13	30 <sup>1</sup> 38	32
10x16		45

## More than standards

### WOODRUFF KEYS FROM DENO<sup>1</sup> MORE THAN JUST A STANDARD ARTICLE.

DENO has been producing Woodruff keys since 1976. Woodruff keys are available ex stock in all DIN 6888 dimensions. We produce the keys in stainless steel 1.4571 and 1.4057.

Other materials in stainless steel, as well as special materials or dimensions can be produced on request.

#### FURTHERMORE WE CAN DO:

- ▀ Hardened Woodruff keys
- ▀ Woodruff keys with galvanic treatment
- ▀ Differently formed keys
- ▀ Inch sizes

#### TECHNICAL ADVICE:

All edges on Woodruff keys are rounded !



# Woodruff keys DIN 6888



standard

## WIDTH/HEIGHT

b x h	Tolerance b	Tolerance h	Material				Width	Height
			l ≈	Optional C45+C	1.4571	1.4057		
<b>Width x height: 1h9 x 1,4h12</b>			<b>length</b>	<b>8800</b>	<b>88X0</b>	<b>88R0</b>		
1 x 1,4	-0,025	-0,100	3,82	880001,001,4			01,0	01,4
1,5 x 2,6	-0,025	-0,100	6,76	880001,502,6	88X001,502,6		01,5	02,6
2 x 2,6	-0,025	-0,100	6,76	880002,002,6	88X002,002,6	88R002,002,6	02,0	02,6
2 x 3,7	-0,025	-0,120	9,66	880002,003,7	88X002,003,7		02,0	03,7
2 x 5	-0,025	-0,120	12,65	880002,005			02,0	05
2,5 x 3,7	-0,025	-0,120	9,66	880002,503,7			02,5	03,7
2,5 x 5	-0,025	-0,120	12,65	880002,505			02,5	05
3 x 3,7	-0,025	-0,120	9,66	880003,003,7	88X003,003,7	88R003,003,7	03,0	03,7
3 x 5	-0,025	-0,120	12,65	880003,005		88R003,005	03,0	05
3 x 6,5	-0,025	-0,150	15,72	880003,006,5			03,0	06,5
3 x 7,5	-0,025	-0,150	18,57	880003,007,5			03,0	07,5
4 x 5	-0,030	-0,120	12,65	880004,005	88X004,005		04,0	05
4 x 6,5	-0,030	-0,150	15,72	880004,006,5	88X004,006,5	88R004,006,5	04,0	06,5
4 x 7,5	-0,030	-0,150	18,57	880004,007,5	88X004,007,5	88R004,007,5	04,0	07,5
4 x 9	-0,030	-0,150	21,63	880004,009			04,0	09
5 x 6,5	-0,030	-0,150	15,72	880005,006,5	88X005,006,5	88R005,006,5	05,0	06,5
5 x 7,5	-0,030	-0,150	18,57	880005,007,5	88X005,007,5	88R005,007,5	05,0	07,5
5 x 9	-0,030	-0,150	21,63	880005,009			05,0	09
5 x 10	-0,030	-0,150	24,49	880005,010			05,0	10
6 x 7,5	-0,030	-0,150	18,57	880006,007,5	88X006,007,5	88R006,007,5	06,0	07,5
6 x 9	-0,030	-0,150	21,63	880006,009	88X006,009	88R006,009	06,0	09
6 x 10	-0,030	-0,150	24,49	880006,010	88X006,010		06,0	10
6 x 11	-0,030	-0,180	27,35	880006,011			06,0	11
6 x 13	-0,030	-0,180	31,43	880006,013			06,0	13
7 x 10	-0,036	-0,150	24,49	880007,010			07,0	10
8 x 9	-0,036	-0,150	21,63	880008,009			08,0	09
8 x 11	-0,036	-0,180	27,35	880008,011	88X008,011		08,0	11
8 x 13	-0,036	-0,180	31,43	880008,013	88X008,013		08,0	13
8 x 16	-0,036	-0,180	43,08	880008,016			08,0	16
10 x 11	-0,036	-0,180	27,35	880010,011			10,0	11
10 x 13	-0,036	-0,180	31,43	880010,013			10,0	13
10 x 16	-0,036	-0,180	43,08	880010,016			10,0	16

All dimensions in mm.

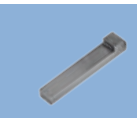
### ORDER EXAMPLE

Woodruff keys 4 x 5, DIN 6888, material C45+C

Article no. **880004,005**





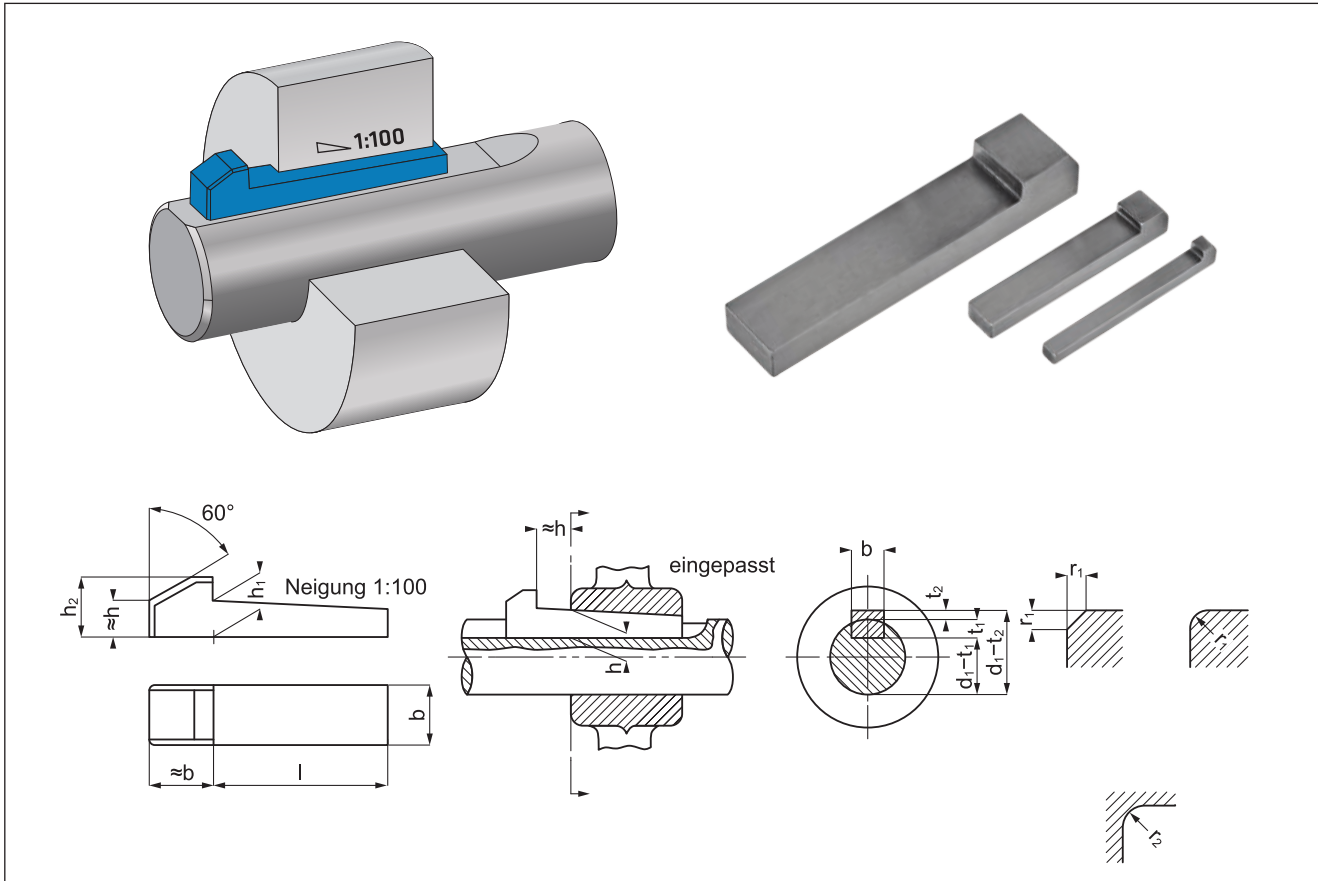
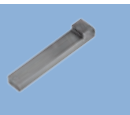


# Gib headed Keys DIN 6887



## Explanation of part numbers

<b>87</b>	<b>0</b>	<b>0</b>	<b>06</b>	<b>06</b>	<b>060</b>	= part number
product group DIN 6887	material e.g. C45+C	tolerance	width	height	length	
87 = DIN 6887	0 = C45+C X = 1.4571 R = 1.4057					



## More than standards

### GIB HEADED KEYS FROM DENO<sup>1</sup> MORE THAN JUST A STANDARD ARTICLE.

DENO has been producing Gib headed keys since 1976. Woodruff keys are available ex stock in all DIN 6888 dimensions. We produce the keys in stainless steel 1.4571 and 1.4057.

Other materials in stainless steel, as well as special materials or dimensions can be produced on request.

#### FURTHERMORE WE CAN DO:

- Hardened Gib headed keys
- Gib headed keys with galvanic treatment
- Differently formend keys

#### TECHNICAL ADVICE:

All edges on Gib headed keys are rounded !



# Gib headed keys DIN 6887



standard

PART NO.	ITEM NO.				
	DIN	Surface	Width	Height	Length
	6887	C45+C			
<b>5 x 5</b>	<b>Width x height: 5x5 h1=5 h2=8</b>				
40	87	00	05	05	040
<b>6 x 6</b>	<b>Width x height: 6x6 h1=6 h2=10</b>				
40	87	00	06	06	040
60	87	00	06	06	060
80	87	00	06	06	080
<b>8 x 7</b>	<b>Width x height: 8x7 h1=7 h2=11</b>				
32	87	00	08	07	032
36	87	00	08	07	036
40	87	00	08	07	040
45	87	00	08	07	045
50	87	00	08	07	050
60	87	00	08	07	060
63	87	00	08	07	063
70	87	00	08	07	070
80	87	00	08	07	080
100	87	00	08	07	100
<b>10 x 8</b>	<b>Width x height: 10x8 h1=8 h2=12</b>				
40	87	00	10	08	040
45	87	00	10	08	045
50	87	00	10	08	050
56	87	00	10	08	056
60	87	00	10	08	060
63	87	00	10	08	063
70	87	00	10	08	070
80	87	00	10	08	080
90	87	00	10	08	090
100	87	00	10	08	100
<b>12 x 6</b>	<b>Width x height: 12x6 h1=6 h2=10</b>				
65	87	00	12	06	065
<b>12 x 8</b>	<b>Width x height: 12x8 h1=8 h2=12</b>				
40	87	00	12	08	040
50	87	00	12	08	050
55	87	00	12	08	055
60	87	00	12	08	060
63	87	00	12	08	063
70	87	00	12	08	070
80	87	00	12	08	080
90	87	00	12	08	090
100	87	00	12	08	100

### ORDER EXAMPLE

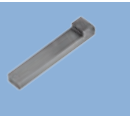
Gib headed key 10 x 8 x 063, DIN 6887, material C45+C

Article no. **87001008063**

# Gib headed keys DIN 6887



A NOSTA - DEMA Company



standard

PART NO.	ITEM NO.				
	DIN	Surface	Width	Height	Length
	6887	C45+C			
<b>14 x 9</b>	<b>Width x height: 14x9 h1=9 h2=14</b>				
50	87	00	14	09	050
60	87	00	14	09	060
63	87	00	14	09	063
70	87	00	14	09	070
80	87	00	14	09	080
90	87	00	14	09	090
100	87	00	14	09	100
110	87	00	14	09	110
120	87	00	14	09	120
160	87	00	14	09	160
<b>16 x 10</b>	<b>Width x height: 16x10 h1=10 h2=16</b>				
60	87	00	16	10	060
70	87	00	16	10	070
80	87	00	16	10	080
90	87	00	16	10	090
100	87	00	16	10	100
<b>18 x 11</b>	<b>Width x height: 18x11 h1=11 h2=18</b>				
63	87	00	18	11	063
70	87	00	18	11	070
80	87	00	18	11	080
90	87	00	18	11	090
100	87	00	18	11	100
110	87	00	18	11	110
120	87	00	18	11	120
140	87	00	18	11	140
160	87	00	18	11	160
180	87	00	18	11	180
<b>20 x 12</b>	<b>Width x height: 20x12 h1=12 h2=20</b>				
80	87	00	20	12	080
90	87	00	20	12	090
100	87	00	20	12	100
120	87	00	20	12	120
140	87	00	20	12	140
160	87	00	20	12	160
180	87	00	20	12	180
200	87	00	20	12	200

**ORDER EXAMPLE**  
 Gib headed key 18 x 11 x 110, DIN 6887, material C45+C  
**Article no. 87001811110**



# Gib headed keys DIN 6887



standard

PART NO.	ITEM NO.				
	DIN	Surface	Width	Height	Length
	6887	C45+C			
<b>22 x 14</b>	<b>Width x height: 22x14 h1=14 h2=22</b>				
100	87	00	22	14	100
110	87	00	22	14	110
120	87	00	22	14	120
125	87	00	22	14	125
140	87	00	22	14	140
160	87	00	22	14	160
200	87	00	22	14	200
<b>25 x 14</b>	<b>Width x height: 25x14 h1=14 h2=22</b>				
100	87	00	25	14	100
110	87	00	25	14	110
120	87	00	25	14	120
130	87	00	25	14	130
140	87	00	25	14	140
160	87	00	25	14	160
180	87	00	25	14	180
200	87	00	25	14	200
<b>28 x 16</b>	<b>Width x height: 28x16 h1=16 h2=25</b>				
125	87	00	28	16	125
140	87	00	28	16	140
180	87	00	28	16	180
200	87	00	28	16	200
<b>32 x 18</b>	<b>Width x height: 32x18 h1=18 h2=28</b>				
180	87	00	32	18	180
260	87	00	32	18	260
<b>36 x 20</b>	<b>Width x height: 36x20 h1=20 h2=32</b>				
160	87	00	36	20	160
200	87	00	36	20	200
220	87	00	36	20	220
280	87	00	36	20	280

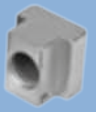
All dimensions in mm.

### ORDER EXAMPLE

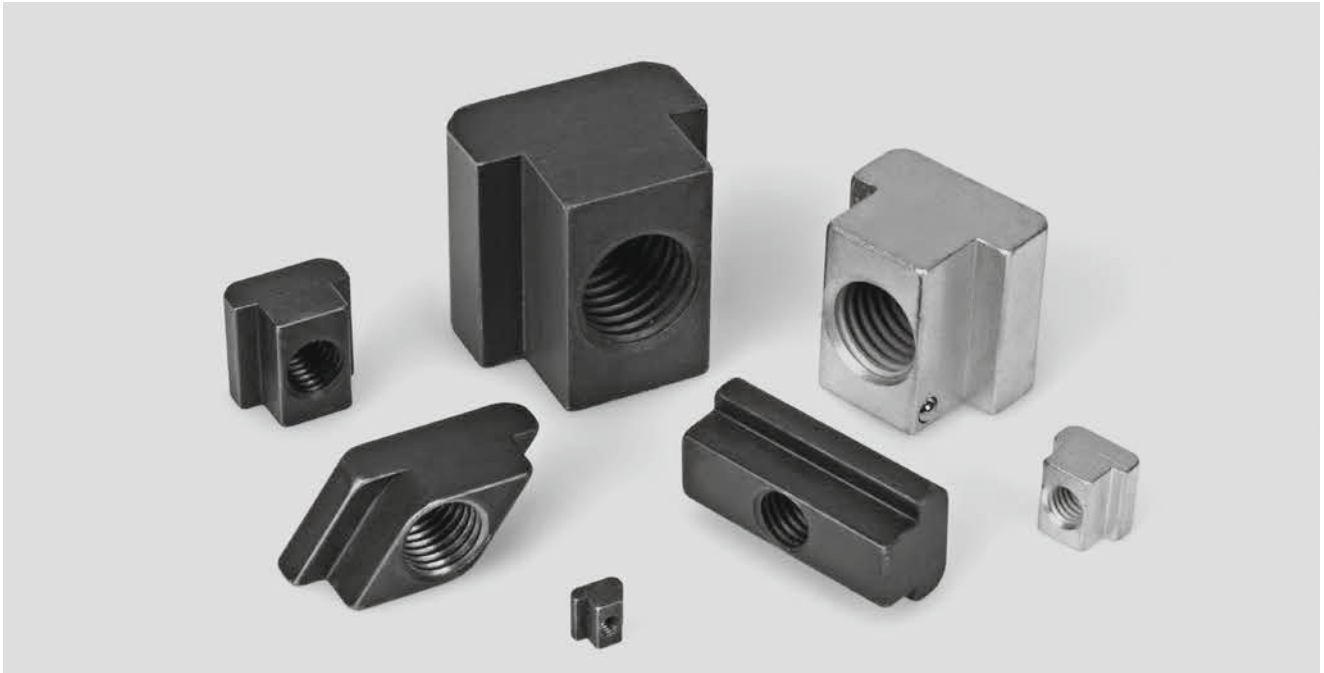
Gib headed key 32 x 18 x 180, DIN 6887, material C45+C

**Article no. 87003218180**



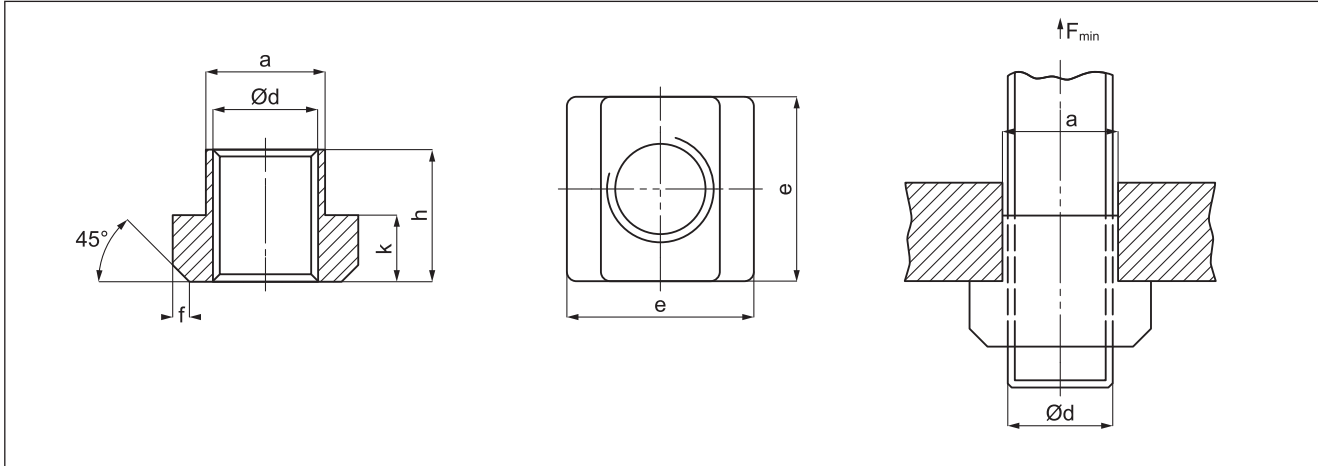


# T-Slot nuts DIN 508



## Explanation of part numbers

08	0	0	10	M08	VZ	= part number
product group DIN 508	material	version	ridge width	Dimension of thread e. g. M8	Surface treat- ment/further information e. g. zinc-plated	
08 = DIN 508	0=VStahl Güte 8 (material grade8) 1 =VStahl Güte 10 (material grade10) X = 1.4571	0 = kurze Aus- führung kurze Aus- führung K = mit Kugel- bremsele- ment mit Kugel- bremsele- ment L = lange Aus- führung lange Aus- führung S=Rhombus Rhombus				



## More than standards

At DENO, you'll find the best possible connecting elements in the standard DIN 508 range or for implementing your own solutions. Our versatile production facilities enable us to offer our assembly technology customers a significant reduction in the amount of work involved with assembly. Thanks to expertise and engineering, we are able to leverage huge competitive advantages for our customers.

The fitting of nuts with fixing systems, for instance with pressure or flat springs, safety catches, locking screws, etc. represents a significant aid to assembly.

### THE PRODUCTS

All common assembly components, e.g.:

- Nuts for T-slots as per DIN 508
- Rhomboid T-slot sliding nuts
- T-slot screws
- Associated C-rail systems
- Hammer-head screws
- T-slot screws for Solar energy systems
- T-slot sliding nuts for Solar energy systems

### THE MATERIAL

Steel, stainless steels, aluminium and special alloys.

### TECHNICAL ADVICE:

All edges on T-slot nuts are rounded!

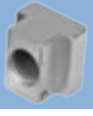
### THE APPLICATIONS

Our products are compatible with virtually all of the assembly systems available on the market. Mechanical engineering and the solar industry are our main clients.

### AVAILABILITY

Delivery of exstock items are generally within 48 hours.





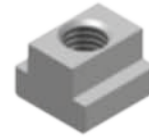
# T-slot nuts DIN 508



standard

## T-SLOT NUTS DIN 508 SHORT

RIDGE WIDTH	ITEM NO.			width	threed	Not for stain-less steel
	material					
	C45+C Güte 8	C45+C Güte 10	1.4571			
05	0800	0810	08X0	05	M04	VZ
06	0800	0810	08X0	06	M04	VZ
06	0800	0810	08X0	06	M05	VZ
08	0800	0810	08X0	08	M05	VZ
08	0800	0810	08X0	08	M06	VZ
10	0800	0810	08X0	10	M05	VZ
10	0800	0810	08X0	10	M06	VZ
10	0800	0810	08X0	10	M08	VZ
12	0800	0810	08X0	12	M06	VZ
12	0800	0810	08X0	12	M08	VZ
12	0800	0810	08X0	12	M10	VZ
14	0800	0810	08X0	14	M08	VZ
14	0800	0810	08X0	14	M10	VZ
14	0800	0810	08X0	14	M12	VZ
16	0800	0810	08X0	16	M12	VZ
16	0800	0810	08X0	16	M14	VZ
18	0800	0810	08X0	18	M12	VZ
18	0800	0810	08X0	18	M14	VZ
18	0800	0810	08X0	18	M16	VZ
20	0800	0810	08X0	20	M16	VZ
20	0800	0810	08X0	20	M18	VZ
22	0800	0810	08X0	22	M20	VZ
24	0800	0810	08X0	24	M20	VZ
24	0800	0810	08X0	24	M22	VZ
28	0800	0810	08X0	28	M24	VZ
36	0800	0810	08X0	36	M30	VZ

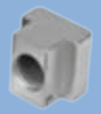


### ORDER EXAMPLE

T-slot nuts 10 x M8, DIN 508, grade 8

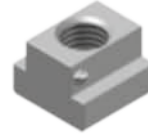
Article no. **080010M08**

# T-slot nuts DIN 508



## T-SLOT NUTS DIN 508 SHORT, WITH BALL

RIDGE WIDTH	ITEM NO.		width	thread	zinc-plated
	material				
	C45+C Güte 8	C45+C Güte 10			
10	080K	081K	10	M08	VZ
12	080K	081K	12	M10	VZ
14	080K	081K	14	M12	VZ
18	080K	081K	18	M16	VZ
22	080K	081K	22	M20	VZ



## T-SLOT NUTS DIN 508 LONG

RIDGE WIDTH	ITEM NO.			width	thread	Not for stain- less steel
	material					
	C45+C Güte 8	C45+C Güte 10	1.4571			
05	080L	081L	08XL	05	M04	VZ
06	080L	081L	08XL	06	M05	VZ
08	080L	081L	08XL	08	M06	VZ
10	080L	081L	08XL	10	M08	VZ
12	080L	081L	08XL	12	M10	VZ
14	080L	081L	08XL	14	M12	VZ
16	080L	081L	08XL	16	M14	VZ
18	080L	081L	08XL	18	M16	VZ
20	080L	081L	08XL	20	M18	VZ
22	080L	081L	08XL	22	M20	VZ
24	080L	081L	08XL	24	M22	VZ
28	080L	081L	08XL	28	M24	VZ
36	080L	081L	08XL	36	M30	VZ



### ORDER EXAMPLE

T-slot nuts 14 x M12 DIN 508 long, grade 8  
**Article no. 080L14M12**



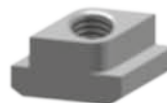
# T-slot nuts DIN 508



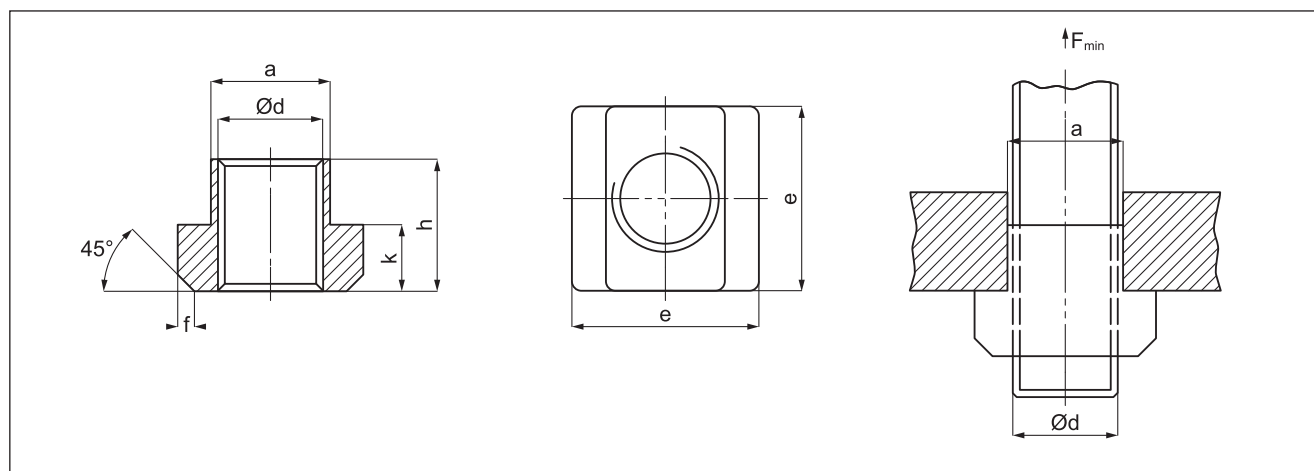
standard

## RHOMBUS-T-SLOT NUTS

RIDGE WIDTH	ITEM NO.		width	thread	zinc-plated
	material				
	C45+C Güte 8	C45+C Güte 10			
06	080S	081S	06	M05	VZ
08	080S	081S	08	M06	VZ
10	080S	081S	10	M08	VZ
12	080S	081S	12	M10	VZ
14	080S	081S	14	M10	VZ
14	080S	081S	14	M12	VZ
16	080S	081S	16	M14	VZ
18	080S	081S	18	M10	VZ
18	080S	081S	18	M16	VZ
20	080S	081S	20	M16	VZ
20	080S	081S	20	M18	VZ
22	080S	081S	22	M16	VZ
22	080S	081S	22	M20	VZ
28	080S	081S	28	M16	VZ
28	080S	081S	28	M24	VZ
36	080S	081S	36	M30	VZ



All dimensions in mm.



### ORDER EXAMPLE

Rhombus-T-Slot Nuts 6 x M5, DIN 508, grade 8

Article no. **080S06M05**



---

# Think global. Act global.

Many of our customers are represented internationally.  
We supply parts of a consistently high quality to their facilities on every continent.

We generate valuable synergies for our customers through collaboration with our companies Nosta, Dema, Marcus and DENO Turkey. As a strong alliance we cover a broad range of products with the highest quality standard to generate best customer satisfaction.



Marcus Komponenter AG  
15335 Järna - Sweden  
[www.marcuskomponenter.se](http://www.marcuskomponenter.se)



DEMA Präzisionsteile GmbH  
91166 Georgensgmünd - Germany  
[www.dema-gmbh.de](http://www.dema-gmbh.de)



Nosta GmbH  
89420 Höchstädt/Donau - Germany  
[www.nosta.com](http://www.nosta.com)



DENO Hassas Parca Sanayi Ltd. Sti:  
34750 Atasehir Istanbul - Turkey  
[www.deno-turkey.com](http://www.deno-turkey.com)



Canara Standard Keys Pvt. Ltd.  
560082 Bengaluru - India  
[www.deno-india.com](http://www.deno-india.com)

